

Tordivel as
Storgata 20, N-0184 Oslo, Norway
www.scorpionvision.com

SCORPION VISION SOFTWARE®

SCORPION IMAGEX

DirectX interface
Camera Viewer
Python Scripting Engine

Firewire cameras from the following vendors are supported:

ADS	OrangeMicro
Allied Vision	PixeLink
Basler Vision	PointGrey
Baumer Optronic	Sony
Hamamatsu	Teli
Imaging Source	Unibrain
JVC	Victor
MicroPix	

SCORPION VISION SOFTWARE CD

ImageX is distributed on the Scorpion Vision Software® CD. The CD has the following contents: Scorpion Vision Software setup program, ImageX setup program, demonstration profiles, camera drivers, and documentation and support programs.



For prices, ordering or more information please contact:

Tordivel AS
Phone +47 2315 8700
Fax +47 2315 8701
office@tordivel.com
www.scorpionvision.com

Scorpion Vision Software® is a registered trademark of Tordivel AS.

The ImageX is a complete software component for adding camera support to any windows application with ease. The ActiveX component contains the following elements:

- DirectX interface to Windows Cameras
- Camera Viewer with zoom, measurement, save and overlay graphics
- Python Scripting Engine

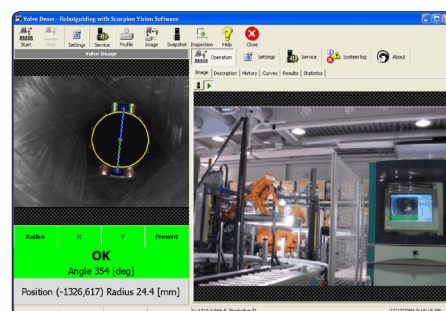
The component is designed for OEMs that need to integrate camera into their applications. With the FireGrab interface, ImageX supports all IIDC compliant firewire cameras through Unibrain's generic drivers.

Advanced features like hardware triggering, non continuous video streams, dynamic shutter, direct register access, raw colour format and mode-7 are supported.

In addition to firewire, ImageX also supports Windows Cameras connected using USB or USB2 complying with the DirectX specification.

ADDING CAMERA TO ANOTHER APPLICATION

A typical usage of ImageX is to add a camera to another application. Below a surveillance camera is added to a Scorpion Robot Vision System.



Robot Vision system with surveillance camera added

PYTHON SCRIPTING ENGINE

The integrated script engine allows the user to communicate with the container application, save images, respond to mouse clicks, calibrate the system to work in physical coordinates and to communicate with other computer systems using rs-232 and tcp/ip.

TECHNICAL DATA

Operating System

- Windows 2000 / Windows XP

Minimum Requirements

- Intel Pentium III 400 MHz
- 128 MB of RAM
- 10 MB free hard drive space

Language Support

- English

Image

- Simulation formats: jpg, bmp 8 and 24 bits
- Save format: 8 and 24 bits windows bitmap
- No restriction on image size

Image Acquisition

- Up to 30 images / second

Development Platforms

- Borland Delphi
- Borland C++
- MS Visual Basic
- MS Visual Basic .Net
- MS Visual Studio

Camera Support

Generic windows, firewire, usb and usb2 cameras through a generic DirectX interface.

Firewire Cameras: All IIDC compliant firewire cameras through Unibrain's generic drivers.

Specifications might change without any notification.